

PRODUCT INFORMATION



W001 Bandimex Tool

Part # BXT00L

- Tensioning capability over 1.0T
- To apply Bandimex Band, L-Band, L-Band Plus, Buckles, L-Clips, Preformed Clamps
- Weight - 2.0kg

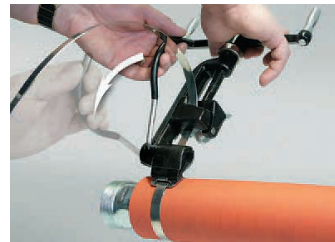


Instructions Band and Buckle



1

Pull buckle on band, ears pointing towards end of band. Form clamp, holding band on band, then push buckle over the doubled band, bending the end approx. 1" under buckle.



4

Pull on cutter lever, band is cut off to correct length.



2

For heavy duty jobs double wrap band.



5

Hold stub of band with thumb, hammer it flat over bridge of buckle, complete clamp by hammering ears of stub.



3

Place band in tool, push down on gripper with thumb, tension clamp by turning handle. Maximum tension is reached when band stops moving through buckle. When required tension has been applied, roll tool over buckle, at the same time reversing handle carefully approx. 1/2 turn to avoid breakage. There is no loss of tension if handle is not reversed too much.

